

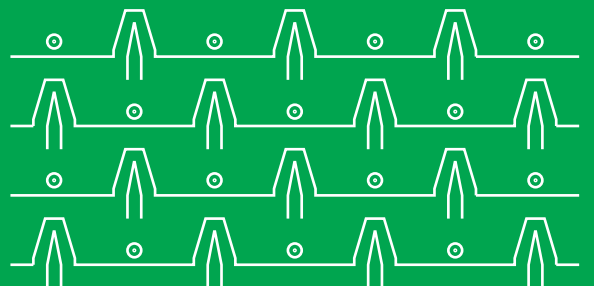
www.tamsaluept.com



TAMSALU EPT AS | TEHNIKA TN 2, 46107, TAMSALU, ESTONIA >>>>>>

# PRODUCTS 2026

**TAMSALU**  
BUILT TO LAST



# TABLE OF CONTENTS

click to  
scroll to  
the  
product

## Buckets and quick couplers

CABLE BUCKETS	5
UTILITY BUCKETS	6
DIGGING BUCKETS	7–8
TILTING GRADING BUCKETS	9–10
STANDARD GRADING BUCKETS	11
SIEVE BUCKETS	12
SCREENING BUCKETS	13
ROTO GRADING BUCKETS	14
V-DITCH BUCKETS	15
U-DITCH BUCKETS	16
RIPPER TEETH	17
WHEEL LOADER BUCKETS	18–19
MULTI PURPOSE FRONT LOADER BUCKETS	20–21
QUICK COUPLERS	22–25
COUPLINGS	26
ADAPTERS	26
<b>Forestry equipment</b>	
MOUNDER	27
TREE SHEAR	28
LOG GRAPPLES	29
FOREST GRAPPLES	30
STAMP REMOVERS & STUB CRUSHERS	31
<b>Road maintenance equipment</b>	
REAR BLADES	32
GRADERS	33
SAND SPREADERS	34
HYDRAULIC CHAIN MULCHERS	35
MECHANICAL CHAN MULCHERS	36–37
<b>Why to choose Tamsalu EPT?</b>	
CONTACTS	38



# TAMSALU EPT

**YOUR TRUSTED PARTNER  
IN METAL INDUSTRY SINCE 1950!**

Tamsalu EPT is a reliable Estonian manufacturer that combines decades of experience with innovation and high-quality craftsmanship. We deliver durable solutions for construction, road maintenance, forestry and agriculture – from concept to completion.

Tamsalu EPT is more than just a manufacturer – we are a trusted partner who values every weld and detail. Our strength lies in experience, quality, and the commitment to offer the best to each customer.

We produce a wide range of excavator buckets, road maintenance and forestry machines. Our equipment is built to withstand tough conditions and intensive use. Every product is crafted in Tamsalu, Estonia – by skilled hands.

**TAMSALU**  
BUILT TO LAST



MEMBER  
OF ESTONIAN  
CHAMBER OF COMMERCE  
AND INDUSTRY

Mitglied von:

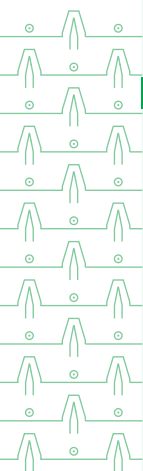


Deutsch-Baltische Handelskammer  
in Estland, Lettland, Litauen



FEDERATION OF ESTONIAN  
ENGINEERING INDUSTRY

2026  
PRODUCTS



# BUCKETS

Tamsalu offers a wide range of high-quality and durable buckets for various construction and land reclamation tasks. Our products are designed to withstand the most demanding working conditions, providing excellent efficiency and reliability.



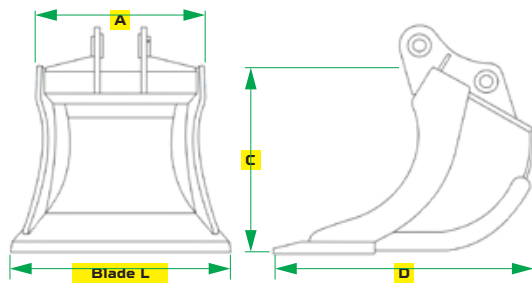
# CABEL BUCKETS



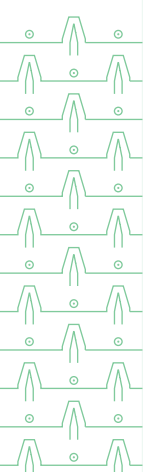
Cable trench buckets are special-purpose buckets used for making narrow trenches to avoid excessive digging and save material.

## FEATURES:

- ⊙ Narrow and deep shape.
- ⊙ Reinforced steel construction.
- ⊙ Various sizes.
- ⊙ Mounting options.

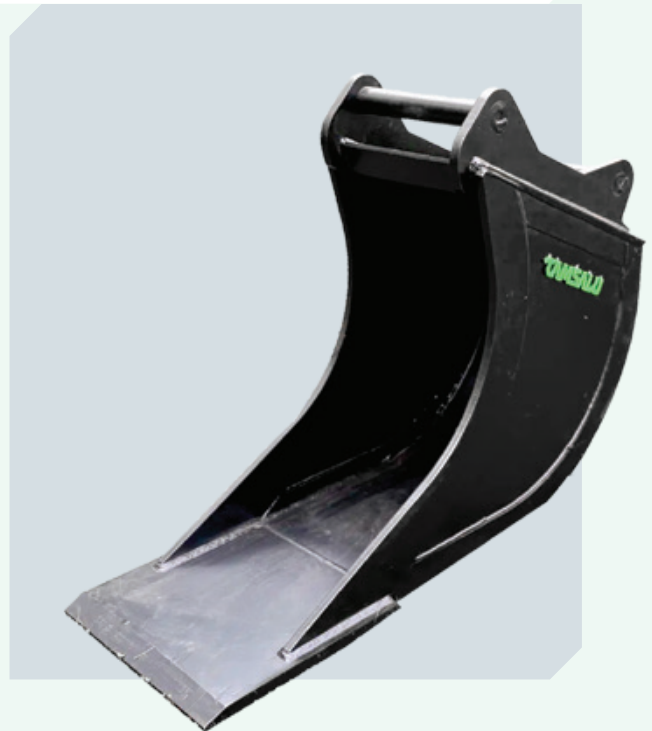


Model	Volume (L)	Weight class	Blade Dimension (mm)	A (mm)	C (mm)	D (mm)	Weight (kg)	Teeth
KD30HD	30	1,5–2,5 t	20×200×L320	370	450	554	55	-
KD35	35	2–2,5 t	16×150×L220	217	494	865	55	-
KD65	65	2,5-5 t	25×250×L320	400	640	852	100	-
KD160	160	5–10 t	25×300×L350	430	800	1130	135	-
KD300	300	13–17 t	25×350×L300	600	1050	1300	300	-
KD400	400	17–21 t	30×475×L200	640	1260	1810	500	-
KD500	500	19–24 t	30×475×L300	740	1260	1810	525	-
KD600	600	22–27 t	30×475×L400	840	1260	1810	550	-
KD1000	1000	24–27 t	40×525×L450	860	1640	2100	880	-



# UTILITY BUCKETS

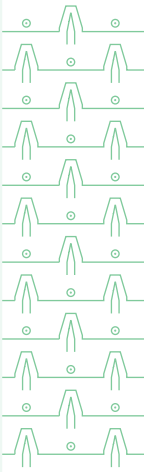
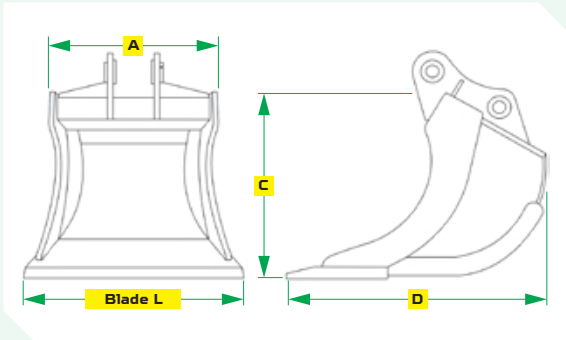
Narrow digging buckets are designed for accurate and deep excavation in confined spaces. Ideal for installing cables, pipelines, and drainage systems. Straight front without teeth. The bucket is very sturdy and is manufactured in Hardox steel from SSAB.



Model	Volume (L)	Weight class	Blade Dimension (mm)	A (mm)	C (mm)	D (mm)	Weight (kg)	Teeth
KKN55	55	1,5-2,5 / 2,5-5 t	16×150×L320	251	454	725	52	-
KKN120HD	120	2,5-5 t	20×155×L440	338	657	945	105	-
KKN180	180	5-10 t	20×140×L470	380	752	1198	160	-
KKN370	370	13-20t	25×200×L600	550	919	1354	295	-
KKN600	600	20-25t	35×270×L660	606	1115	1718	525	-

# DIGGING BUCKETS

Tamsalu digging buckets are engineered to endure the most demanding jobsites. While standard buckets wear out quickly in abrasive soils, our design focuses on structural rigidity and premium material selection.



**MACHINE CLASS UP TO 7 T**

Model	Volume (L)	Weight class	Dimension (mm)	A (mm)	C (mm)	D (mm)	Weight (kg)	Teeth
KK90	90	2,0–5 t	16×150×L250	395	500	120	75	-
KK90	90	2,0–5 t	20×125×L520	443	529	591	79	-
KK90-CAT	90	2,0–5 t	20×125×L520	443	529	601	87	YES
KK145	145	3,5–5 t	20×150×L520	435	648	800	96	-
KK145-CAT	145	3,5–5 t	20×150×L520	435	648	812	104	YES
KK165	165	3,5–5 t	20×150×L600	515	648	784	110	-
KK165-CAT	165	3,5–5 t	20×150×L600	515	648	798	122	YES
KK175	175	2,5-5 t	20×200×L800				144	-
KK175-CAT	175	2,5-5 t	20×200×L800				156	YES
KK185	185	3,5–5 t						-
KK185-CAT	185	3,5–5 t						YES
KK250	340	5–7 t	25×250×L800	730	740	1020	273	-
KK250-CAT	340	5–7 t	25×250×L800	730	740	1020	286	YES

**MACHINE CLASS FROM 8 T**

Model	Volume (L)	Weight class	Blade Dimension (mm)	A (mm)	C (mm)	D (mm)	Weight (kg)	Teeth
KK260	260	6–8 t	25×200×L650	557	753	939	160	-
KK260-CAT	260	6–8 t	25×200×L650	557	753	963	160	YES
KK320	320	6–8 t	25×250×L820	739	768	990	215	-
KK320-CAT	320	6–8 t	25×200×L870	739	783	1014	225	YES
KK400	400	8–13 t	25×350×L830	760	795	1267	271	-
KK400-CAT	400	8–13 t	30×200×L870	760	795	1288	294	YES
KK700	700	14–17 t	35×300×L1000	935	1000	1229	499	-
KK700-CAT	700	14–17 t	35×300×L1000	935	1000	1447	581	YES
KK800	800	14–17 t	35×300×L1100	1035	1091	1246	495	-
KK800-CAT	800	14–17 t	35×300×L1100	1035	1121	1464	610	YES
KK1200	1200	23–15 t	40×400×L1300	1240	1136	1567	951	-
KK1200-CAT	1200	23–15 t	40×300×L1360	1240	1182	1620	1015	YES
KK1400	1400	24–28 t	50×500×L1380	1260	1150	1682	1130	-
KK1400-CAT	1400	24–28 t	50×400×L1480	1260	1201	1748	1238	YES
KK1700-CAT	1700	28–32 t	50×500×L1650	1430	1241	1967	1567 / 1590	YES



# TILTING GRADING BUCKETS

Tiltable grading buckets are special tools used for precise ground leveling, creating slopes, and finishing soil surfaces. The bucket can be tilted at different angles, allowing greater flexibility in complex jobs. One or dual-cylinder mechanism with horizontal or upright positioning.



**MACHINE CLASS UP TO 5 T**

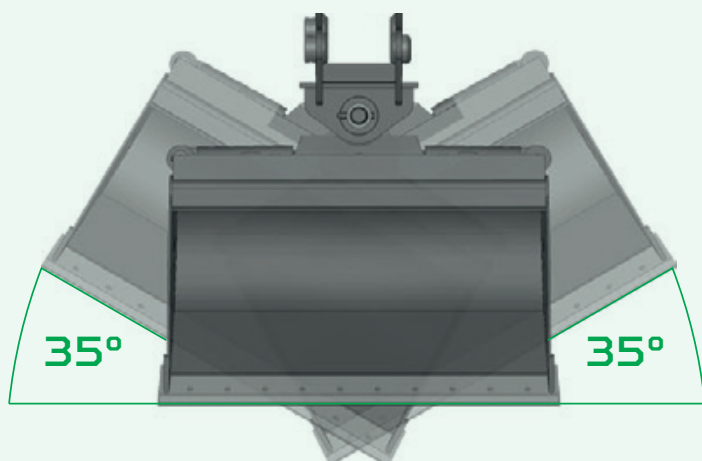
Model	Volume (L)	Weight class	Dimensions (mm)	Weight (kg)	Cylinders
KP55HD-H2	55	1,5–2,5 t	12×100×L830	75	2 (H)
KP75HD-H2	75	1,5–2,5 t	12×100×L1040	80	2 (H)
KP90HD-H2	90	1,5–2,5 t	12×100×L1000	90	2 (H)
KP125HD-H2	125	2,5–5 t	12×100×L1000	125	2 (H)
KP150-H2	150	2,5–5 t	20×200×L1080	180	2 (H)
KP175-H2	175	2,5–5 t	20×200×L1080	210	2 (H)
KP190-H2	190	2,5–5 t	20×200×L1080	225	2 (H)
KP220-H2	220	2,5–5 t	20×200×L1080	240	2 (H)
KP240-H2	240	2,5–5 t	20×200×L1080	260	2 (H)



**MACHINE CLASS FROM 8,5 T**

Model	Volume (L)	Weight class	Dimensions (mm)	Weight (kg)	Cylinders
KR320-V1	320	5–10 t	20×200×L1350	358	1 (V)
KP270-H2	270	5–10 t	16×150×L1220	310	2 (H)
KP350-H2	350	5–10 t	20×200×L1330	335	2 (H)
KP550-V1	550	13–20 t	30×270×L1450	820	1 (V)
KP650-V1	650	13–20 t	30×270×L1550	900	1 (V)
KR550-V1	550	13–20 t	30×270×L1620	850	1 (V)
KP900-V1	900	13–20 t	30×270×L1700	960	1 (V)
KP900-V2	900	13–20 t	30×270×L1700	1004	2 (V)
KP950-H2	950	13–20 t	30×270×L1750	1020	2 (H)
KP1100-V1	1100	13–20 t	30×270×L1900	1175	1 (V)
KP1100-V2	1100	13–20 t	30×270×L1900	1210	2 (H)
KP1100-V2	1100	20–25 t	30×270×L1900	1280	2 (H)
KP1150-H2	1150	13–20 t	30×270×L1950	1210	2 (H)
KP1150-H2	1150	20–25 t	30×270×L1950	1300	2 (H)
KP1300-V2	1300	35 t	40×375×L2100	1850	2 (V)

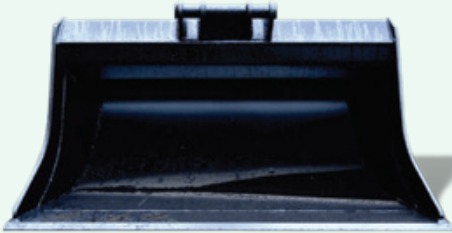
(L) horizontal cylinder | (V) upright position cylinder



# STANDARD GRADING BUCKETS

Grading buckets are built for professional use where the focus is on speed, durability, and simplicity.

Unlike tiltable buckets, these are stationary and do not allow tilting of the working position.

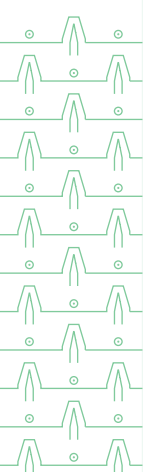


## MACHINE CLASS UP TO 5 T

Model	Volume (L)	Weight class	Dimensions (mm)	A (mm)	C (mm)	D (mm)	Weight (kg)
KP55HD	55	1,5–2,5 t	12×100×L830				48
KP75HD	75	1,5–2,5 t	12×100×L1040				55
KP90HD	90	1,5–2,5 t	12×100×L1000				65
KP125HD	125	2,5–5 t	12×100×L1000				90
KP150	150	2,5–5 t	20×200×L1080				130
KP175	175	2,5–5 t	20×200×L1080				160
KP190	190	2,5–5 t	20×200×L1080				170
KP220	220	2,5–5t.	20×200×L1080				185
KP240	240	2,5–5 t	20×200×L1080				190

## MACHINE CLASS FROM 8 T

Model	Volume (L)	Weight class	Dimensions (mm)	A (mm)	C (mm)	D (mm)	Weight (kg)
KP270	270	5–10 t	16×150×L1220				220
KP350	350	5–10 t	20×200×L1330				250
KP550	550	13–20 t	30×270×L1450				530
KP650	650	13–20 t	30×270×L1550				660
KP900	900	13–20 t	30×270×L1700				720
KP1100	1100	18–21 t	30×270×L1900				830
KP1270	1270	21–25 t	40×320×L2200				1012



# SIEVE BUCKETS

Sieve buckets are specially designed excavator attachments that enable the efficient removal and filtering of water-saturated sediments. These innovative buckets are essential for cleaning and dredging water bodies, offering an environmentally friendly solution for wetland remediation.

## SIEVE BUCKETS ARE PRIMARILY USED FOR:

- Ⓞ Cleaning ditches and canals
- Ⓞ Dredging water bodies
- Ⓞ Remediating muddy areas
- Ⓞ Restoring wetlands



Model	Volume (L)	Weight class	Dimensions (mm)	Weight (kg)	Cylinders
KSR1150	1050	13–20 t	25×250×L2500	855	1 (V)
KSR1170	1170	13–20 t	25×250×L2800	940	1 (V)
KSR840-V1	840	13–20 t	25×250×L2000	985	1 (V)
KSR1050-V2	1050	13–20 t	25×250×L2500	1190	2 (V)
KSR1050-V1	1050	13–20 t	25×250×L2500	1145	1 (V)
KSR1170-V2	1170	13–20 t	25×250×L2800	1295	2 (V)
KSR1170-V1	1170	13–20 t	25×250×L2800	1250	1 (V)

# SCREENING BUCKETS

Screening buckets are excavator attachments used for sorting and screening materials. It consists of a perforated bucket or grid-shaped tool that allows smaller particles to fall through, while larger rocks or other materials remain inside the bucket.

## SCREENING BUCKETS ARE COMMONLY USED FOR:

- ⦿ Separating soil and rocks
- ⦿ Sorting construction debris
- ⦿ In waste management
- ⦿ In landscaping work
- ⦿ Screening compost materials

Tamsalu screening buckets are constructed from wear-resistant steel, ensuring a long service life even in the most demanding conditions where precision and durability are paramount.

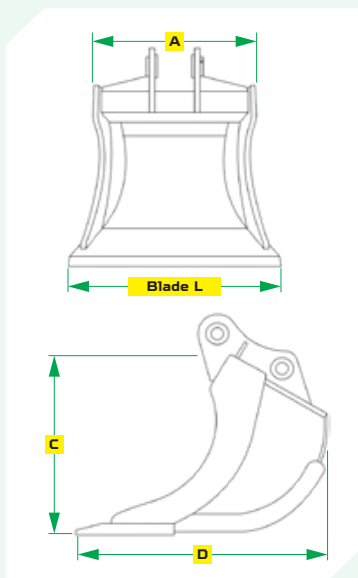


Model	Volume (L)	Weight class	Dimensions (mm)	A (mm)	C (mm)	D (mm)	Weight (kg)
KS1100	1100	13–20 t	30×270×L1900				680

# ROTO GRADING BUCKETS

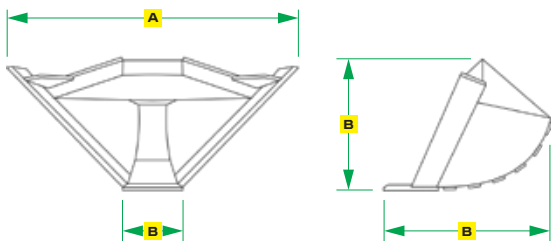
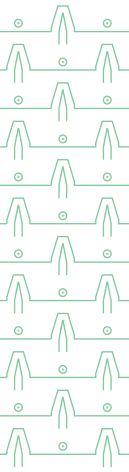
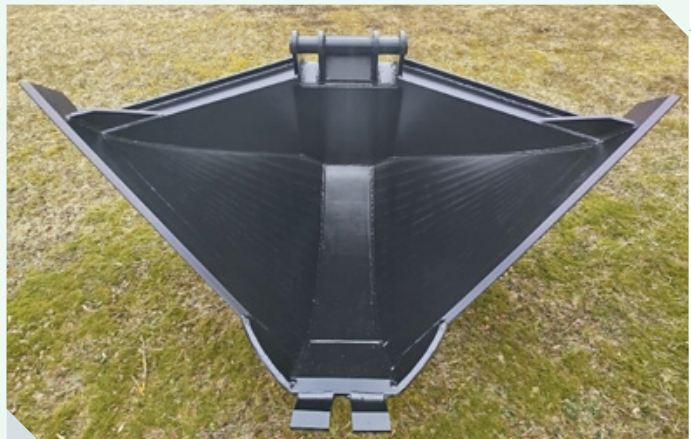
Roto grading bucket are tools attached to excavators and other machines that allow the bucket to rotate 360 degrees around its axis. These buckets are designed for use with tilt-rotator systems in excavators, offering versatility and efficiency for various tasks.

Model	Volume (L)	Weight class	Dimensions (mm)	A (mm)	C (mm)	D (mm)	Weight (kg)
KR210HD	210	4–5 t	20×200×L1200	991	431	889	151
KR240HD	240	4–6 t	16×150×L1220	943	550	820	130
KR300HD	300	5–7 t	20×200×L1300	1101	585	819	220
KR320HD	320	5–7 t	20×200×L1300	1150	588	830	250
KR430HD	430	7–9 t	20×200×L1350	1140	626	930	234
KR400HD	400	7–9 t	20×200×L1400	1185	640	931	270
KR650HD	650	12–14 t	25×250×L1500	1190	730	1259	490
KR700HD	700	13–16 t	25×250×L1500	1184	749	1293	515
KR750HD	750	14–17 t	25×250×L1700	1400	735	1320	540
KR800HD	800	16–18 t	25×250×L1600	1274	730	1351	545
KR975HD	975	17–19 t	30×270×L1900	1600	935	1520	620
KR1050HD	1050	19–22 t	30×300×L1820	1607	874	1343	765
KR1300HD	1300	22–26 t	35×270×L2000	1529	836	1560	920
KR1600HD	1600	26–30 t	35×270×L2000	1525	889	1570	945



# V-DITCH BUCKETS

V-type buckets are specialized industrial and engineering components designed with a distinctive V-shaped cross-section. Specifically engineered for the creation and maintenance of drainage systems in both agricultural fields and challenging peatlands.

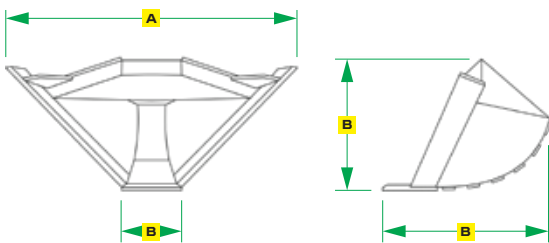
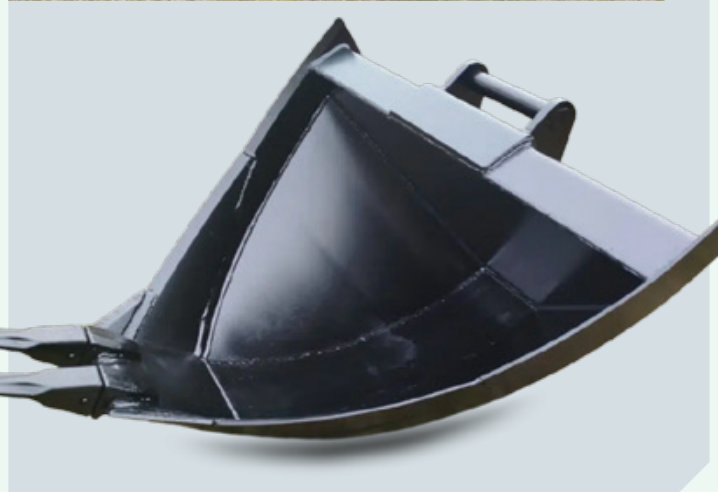


V-DITCH

Model	Volume (L)	Weight class	Dimensions (mm)	A (mm)	C (mm)	D (mm)	Weight (kg)	Teeth
KV300-HX	300	2,5–10 t	20×250×L300	1670	710	900	220	YES
KV400-HX	400	2,5–10 t	20×250×L300	1715	870	970	250	YES
KV550-HX	550	13–20 t	30×350×L300	2050	1200	1100	437	YES
KV550-CAT	550	13–20 t	30×350×L300	2035	1200	1100	435	YES
KV850-HX	850	13–20 t	30×370×L300	2350	1370	1550	616	YES
KV850-CAT	850	13–20 t	30×370×L300	2350	1370	1550	615	YES
KV900-HX	900	13–25 t	30×370×L340	1520	1250	1050	1050	YES

# U-DITCH BUCKETS

Forest drainage channel buckets are specialized buckets designed for digging, maintaining, and cleaning drainage ditches in forests. Suitable for both creating new drainage channels and maintaining existing ones.



## U-DITCH

Model	Volume (L)	Weight class	Dimensions (mm)	A (mm)	C (mm)	D (mm)	Weight (kg)	Teeth
KU500-CAT	500	13–20 t	30×400×L290	1550	1250	1350	476	YES
KU700-CAT	700	13–20 t	30×400×L290	1720	1275	1500	579	YES
KU900-CAT	900	13–20 t	40×400×L290	1870	1300	1650	712	YES
KU900-CAT	900	20–25 t	40×400×L290	1870	1300	1650	740	YES



# RIPPER TEETH

Ripper teeth are powerful excavator attachments designed specifically for breaking up compacted soil, frozen ground, asphalt, and rock formations. Our ripper teeth feature hardened steel construction with optimized tip geometry for maximum penetration force. Tamsalu ripper teeth are specifically engineered for the rapid and efficient breaking, lifting, and removal of asphalt and other hard road surfaces.

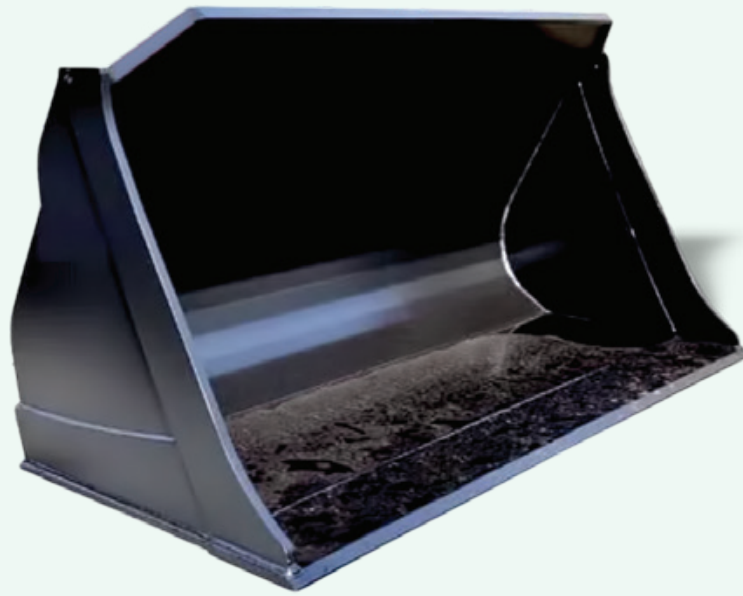


Model	Weight class	A (mm)	B (mm)	C (mm)	Weight (kg)
KA10-CAT	5–10 t				119
KA20-CAT	13–20 t				310
KA22-CAT	13–20 t				432
KA22-RC	13–20 t				440
KA22-RC	20–25 t				482
KA25-RC	20–25 t				502

# WHEEL LOADER BUCKETS

Tamsalu wheel loader buckets are engineered to withstand heavy-duty applications across construction, mining, agriculture, and waste management industries. Our wheel loader buckets feature HB500 steel protection and a streamlined design.



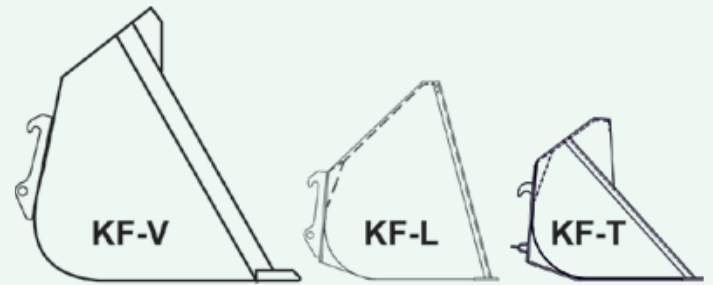


Model	Volume (L)	Weight class	Dimensions (mm)	A (mm)	C (mm)	D (mm)	Weight (kg)
KFN1100HD	1100		20×200×L2042				478
KFN1200HD	1200		20×200×L2240				508
KFN2200HD	2200		30×300×L2750				1100
KFN2500HD	2500		30×300×L2750				1170
KFN3000HD	3000		35×300×L2750				1450
KFN3500HD	3500		40×300×L3000				1685



# MULTI PURPOSE FRONT LOADER BUCKETS

Multi-purpose front loader buckets are versatile attachments designed for tractors and loaders that combine the functionality of several different implements into one efficient tool.



LIFTING CAPACITY UP TO 1,2 T

Model	Volume (L)	Width	Dimensions (mm)	A (mm)	C (mm)	D (mm)	Weight (kg)
KFT400	400	1250	10×100×L1290				120
KFT650	650	1500	10×100×L1540				140
KFT850	850	1800	10×100×L1840				210
KFT950	950	2000	10×100×L2040				230
KFT1150	1150	2200	10×100×L2240				255
KFT1350	1350	2300	10×100×L2340				265
KFT1400	1400	2450	10×150×L2490				275
KFT1500	1500	2550	10×180×L2590				295



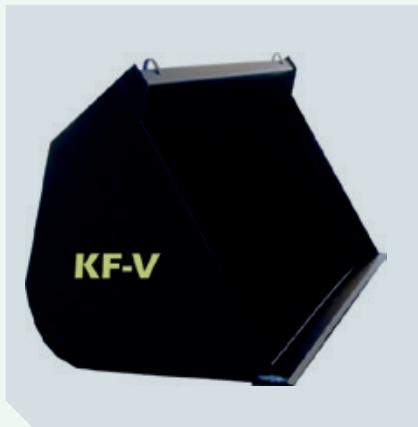
**LIFTING CAPACITY UP TO 2 T**

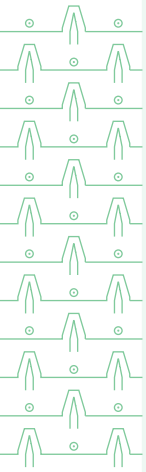
Model	Volume (L)	Width	Dimensions (mm)	A (mm)	C (mm)	D (mm)	Weight (kg)
KFL900	900	1800	15×150×L1840				310
KFL1300	1300	2000	15×150×L2040				320
KFL1350	1350	2200	15×150×L2240				360
KFL1600	1600	2450	15×150×L2490				395
KFL1700	1700	2550	15×150×L2590				410



**LIFTING CAPACITY UP TO 3 T**

Model	Volume (L)	Width	Dimensions (mm)	A (mm)	C (mm)	D (mm)	Weight (kg)
KFV1700	1700	1800	20×200×L1840				390
KFV1900	1900	2000	20×200×L2040				410
KFV2000	2000	2200	20×200×L2240				460
KFV2500	2500	2550	20×200×L2540				495





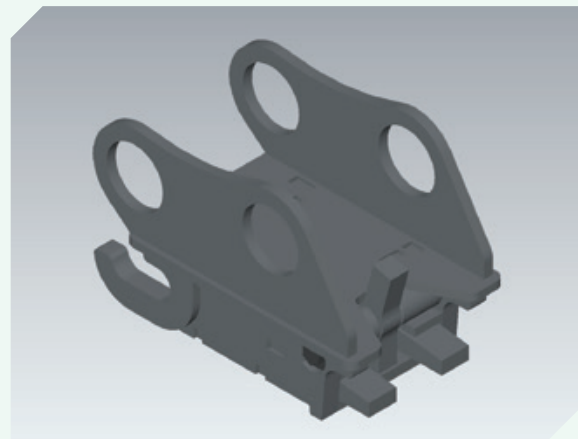
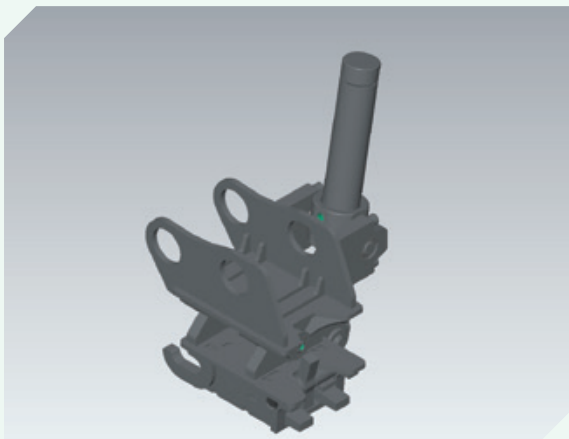
# QUICK COUPLERS

Discover durable excavator quick couplers. Static and tilting models with semi-automatic, hydraulic and mechanical options for safe, efficient attachment changes across all excavator sizes. Compact versions available for S40 quick couplers.



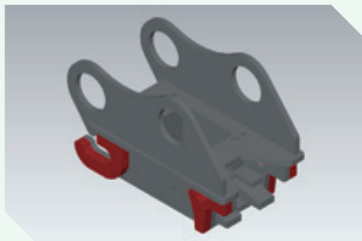
## QUICK COUPLERS S30

Model	Type	Locking System	Weight class	Weight (kg)	Cylinders	Hook
QCZ-S30M/180		Mechanical	1–2 t	26		-
QC-S30PA/150		Semi-automatic	1–2 t	14	1	-
QCZ-S30MK/150	Tilting	Mechanical	1–2 t	48	1	-
QCZ-S30MK/180	Tilting	Mechanical	1–2 t	54	1	-
QC-S30PAK/150	Tilting	Semi-automatic	1–2 t	36	1	-



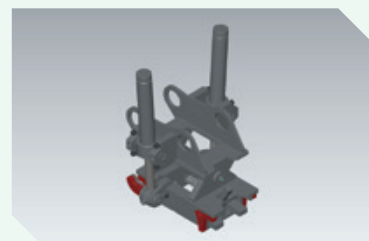
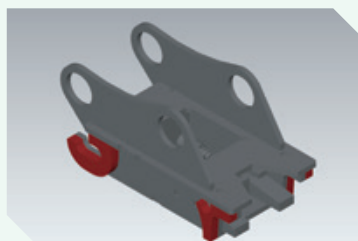
**QUICK COUPLERS S40**

Model	Type	Locking System	Weight class	Weight (kg)	Cylinders	Hook
QCZ-S40M		Mechanical	2–5 t	53		Yes
QC-S40HK		Hydraulic	2–5 t	87	1	Yes
QC-S40H	Tilting	Hydraulic	2–5 t	46	1	Yes
QCZ-S40MK	Tilting	Mechanical	2–5 t	93	1	Yes
QC-S40HKC	Tilting, compact	Hydraulic	2–5 t	94	1	Yes
QC-S40PA		Semi-automatic	2–5 t	46	1	Yes
QC-S40PAK	Tilting	Semi-automatic	2–5 t	87	1	Yes
QC-S40PAKC	Tilting, compact	Semi-automatic	2–5 t	95	1	Yes



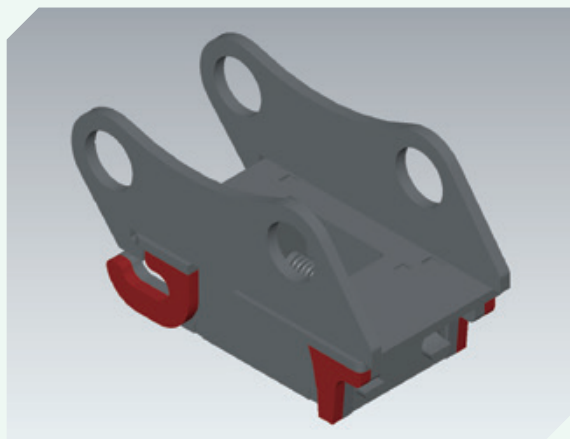
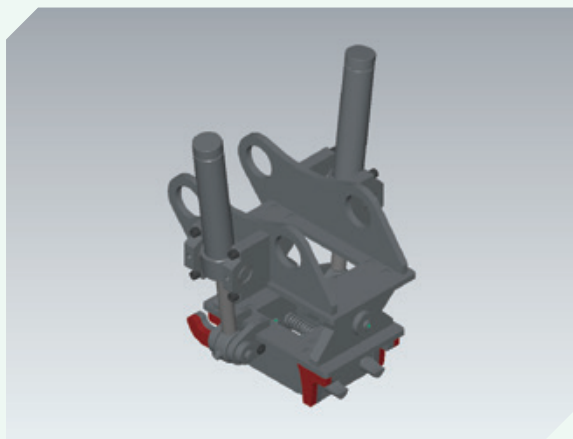
**QUICK COUPLERS S45/S50**

Model	Type	Locking System	Weight class	Weight (kg)	Cylinder	Hook
QCZ-S45M		Mechanical	5–11 t	110		Yes
QCZ-S45MK	Tilting	Mechanical	5–11 t	158	1	Yes
QC-S45H		Hydraulic	5–11 t	65	1	Yes
QC-S45HK	Tilting	Hydraulic	5–11 t	158	1	Yes
QCZ-S45HK2s	Tilting	Hydraulic	5–11 t	181	2	Yes
QCZ-S45MK2s	Tilting	Mechanical	5–11 t	178	2	Yes
QC-S45PA	Tilting	Semi-automatic	5–11 t	66	2	Yes
QC-S45PAK	Tilting	Semi-automatic	5–11 t	159	2	Yes



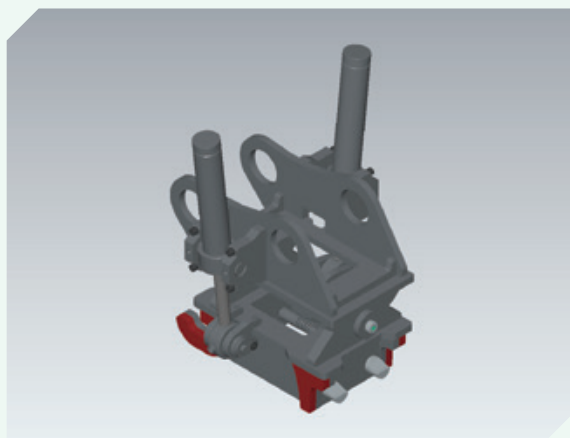
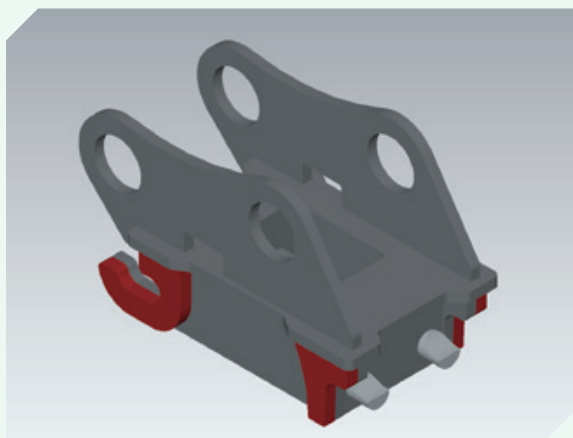
### QUICK COUPLERS S60

Model	Type	Locking System	Weight class	Weight (kg)	Cylinders	Hook
QC-S60H		Hydraulic	12–19 t	147	1	Yes
QC-S60HK	Tilting	Hydraulic	12–19 t	350	2	Yes



### QUICK COUPLERS S70/S80

Model	Type	Locking System	Weight class	Weight (kg)	Cylinders	Hook
QC-S70H		Hydraulic	20–30 t	240	1	Yes
QC-S70HK	Tilting	Hydraulic	20–30 t	502	2	Yes



**QUICK COUPLERS NTP10**

Model	Type	Locking System	Weight class	Weight (kg)	Cylinders	Hook
QCZ-NTP10M		Mechanical	13–20 t	176		Yes
QCZ-NTP10H		Hydraulic	13–20 t	182	1	Yes
QCZ-NTP10HK2s	Tilting	Hydraulic	13–20 t	410	2	Yes
QCZ-NTP10HK	Tilting	Hydraulic	13–20 t	400	1	Yes



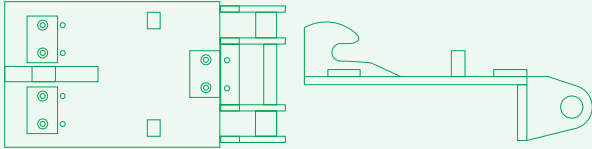
**QUICK COUPLERS NPT15**

Model	Type	Locking System	Weight class	Weight (kg)	Cylinders	Hook
QCZ-NTP15M		Mechanical	20–25 t	220		YES
QCZ-NTP15H		Hydraulic	20–25 t	220	1	YES
QCZ-NTP15HK2s	Tilting	Hydraulic	20–25 t	420	2	YES



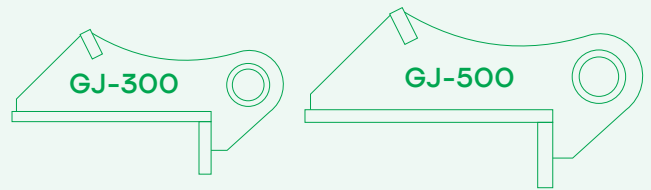
### COUPLINGS NTP

Model	Weight class	Weight (kg)
NTP10	13–20 t	115
NTP20	20–25 t	160
NTP30	35 t	220



### MILLER GJERSTAD & CAT TYPE

Model	Weight class	Weight (kg)
GJ300	13–20 t	46
GJ500	13–20 t	93
CW40	13–20 t	205
ML60	13–20 t	45
ML65	13–20 t	50
ML80	20–25 t	135
CW30	20–25 t	160



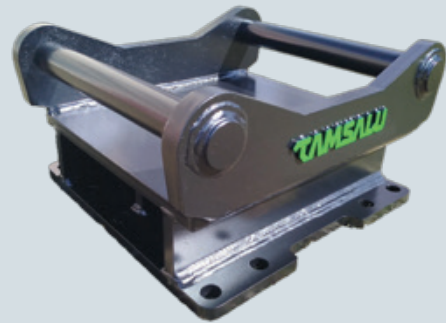
### COUPLINGS S-TYPE

Model	Weight class	Weight (kg)
S30/150	1,5–2,5 t	7
S30/180	1,5–2,5 t	8
S40	2,5–5 t	14
S45	5–10 t	23
S50	5–10 t	27
S60	13–20 t	44
S70	20–25 t	71
S80	35 t	145



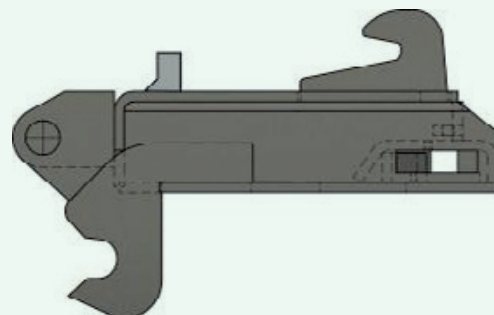
### HYDRAULIC HAMMERS ADAPTER

Model	Weight class	Weight (kg)
-------	--------------	-------------



### ADAPTERS

Model	Weight class	Weight (kg)
NTP10/NTP20M	15–25 t	320
NTP20/NTP10M	15–25 t	322
ML65/NTP10M	13–20 t	220
ML80/NTP10M	15–25 t	308
S60/NTP10M	13–20 t	202



# MOUNDER

Tamsalu MT2 is a specialized attachment designed for reforestation projects requiring rapid and high-quality soil preparation. The device flips the sod upside down and presses it firmly into the ground, creating a nutrient-rich, elevated planting spot that promotes seedling growth and protects against water-logging and competing vegetation.



Model	Weight class	Dimensions (mm)	A (mm)	B (mm)	C (mm)	Weight (kg)	Cylinders
MT2	13–20 t	700				590	1

# TREE SHEAR

Tamsalu VL1 is a top-tier tree shear engineered for medium to heavy-class excavators (13–20 t). A powerful 850 kg shear with NTP10/S60 hitch compatibility. Built with Hardox 450, featuring replaceable blades and impact-resistant bronze bushings for maximum durability

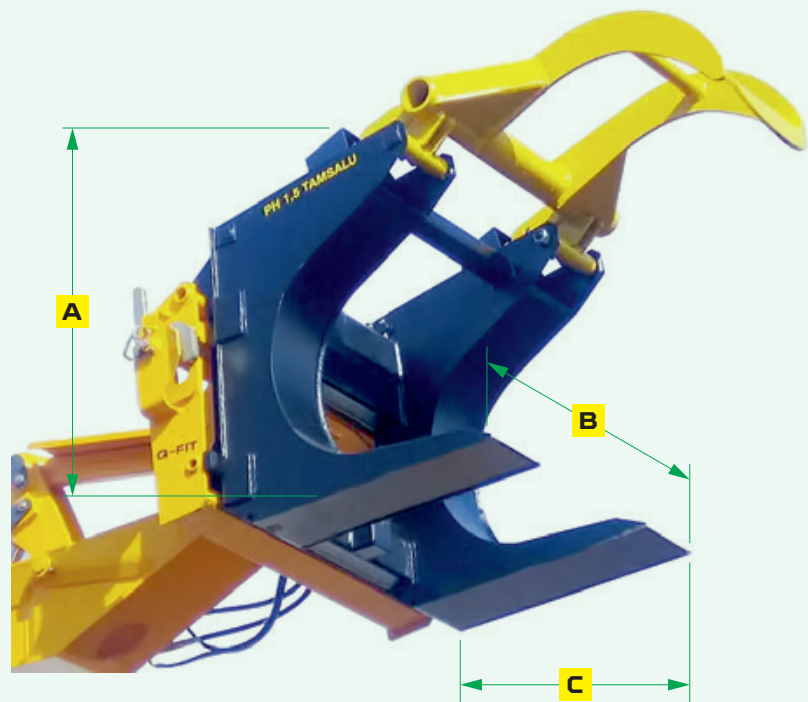
- ⊙ MAX. tree diameter up to 30 cm
- ⊙ Grip width 117 cm
- ⊙ Recommended working pressure is 250 bar, 100–120 l/min
- ⊙ Productivity: 0.1 ha/h
- ⊙ Made of quality steel HARDOX450



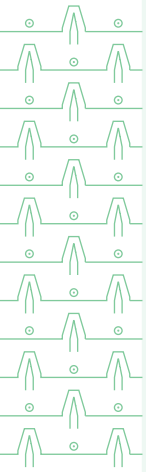
Model	Weight class	Dimensions (mm)	A (mm)	B (mm)	C (mm)	Weight (kg)	Cylinders
VL1	13–20 t					850	1

# LOG GRAPPLES

Tamsalu PH-series grapples are designed to withstand heavy loads and long periods of intensive operation. The grapple's specific geometry and robust construction ensure maximum gripping force and material stability during lifting.

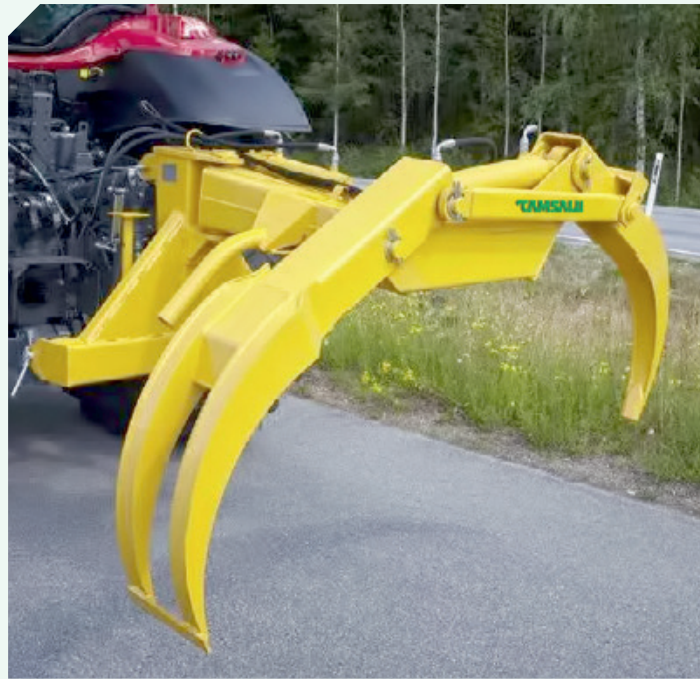


Model	Weight class	Grapple Surface	A (mm)	B (mm)	C (mm)	Weight (kg)	Cylinders
PH1,2	Lifting capacity up to 2t	0,5 m <sup>2</sup>				270	1
PH1,5	Lifting capacity up to 4t	0,7 m <sup>2</sup>	1250	1150	1000	500	2



# FOREST GRAPPLE

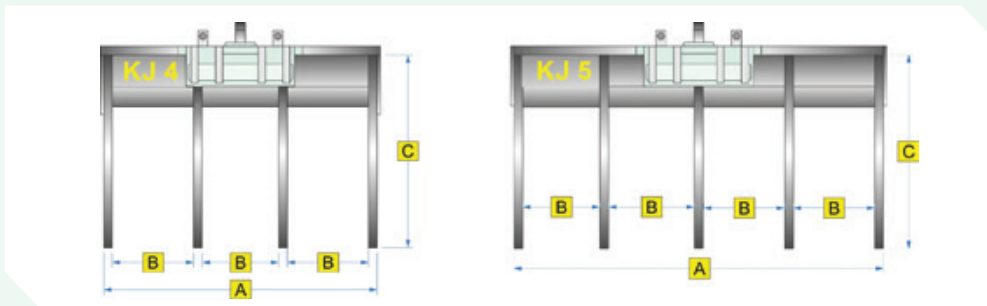
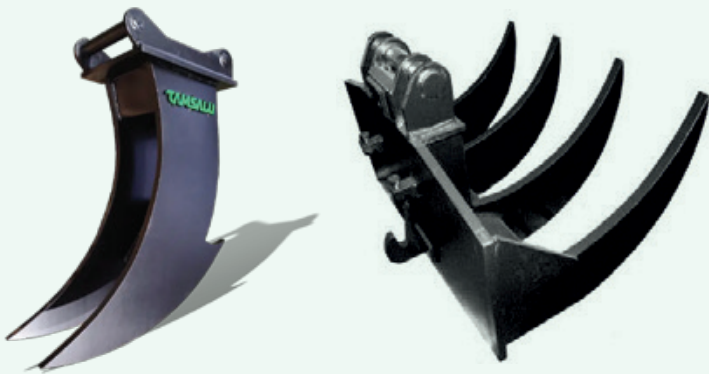
Tamsalu rear mounted MH2 forest grapple is designed for hauling out and stacking forest material. The lifting capacity for the 3m range is 1.5m<sup>3</sup>. Supplied with 2 powerful hydraulic cylinders on boom and grapple.



Model	Stacking Height	Rotation Angle	Grab Width	Min. material Diameter	Mount Type	Weight (kg)	Cylinders
MH2	1,5 m	+ - 30°	2 m	0,15 m	3-ppoint	300	2

# STUMP RIPPER & STUB CRUSHER

Tamsalu KJ-series is engineered to withstand extreme forces, allowing for the rapid extraction of stumps and root systems while leaving behind a clean, leveled surface.



Stub crusher features heavy-duty tines that effectively separate rocks, roots, and vegetation from valuable topsoil. The optimized spacing design allows for maximum debris collection while minimizing soil loss during forestry and site preparation operations.

Model	Weight class	Dimensions (mm)	A (mm)	B (mm)	C (mm)	Weight (kg)	Hooks
KJ2	5–10 t					180	2
KJ4	13–20 t		1180	340	900	776	4
KJ4	20–25 t		1180	340	900	791	4
KJ5	13–20 t		1590	340	900	940	5
KJ5	20–25 t		1590	340	900	955	5

# REAR BLADES

Tamsalu rear blades are engineered for demanding professional use, offering unmatched durability and versatility. Powerful hydraulic cylinders allow for seamless blade angle adjustments directly from the cabin, providing precision and speed during operation.



Model	Blade Width	Blade Height	Weight (kg)	Tires	Boom Type
LR3	2,5 m	0,63 m	536	4.00–8"	Hydraulically rotatable
LR4-5	3,0 m	0,63–1 m	773	6.00–9"	Hydraulically rotatable

## SPECIFICATIONS

- ⊙ Attachment type: 3-point (other hitch attachments available upon request)
- ⊙ Boom rotation angle hydraulically adjustable (right/left): 30°
- ⊙ Area of use: as a working tool for tractors up to 85 hp(LR3) and 120–150 hp, (LR4–5)for clearing roads of snow.
- ⊙ For leveling gravel roads with additional wheels
- ⊙ Boom hydraulically rotatable 270°
- ⊙ Complete support rails
- ⊙ Additional options upon request: ice blade and hydraulic protection device, (other hitch attachments available upon request).

# GRADERS

Tamsalu GJ 2,4 XL is a professional-grade attachment specifically designed for the efficient maintenance and profiling of gravel roads. Featuring three leveling blades, a hydraulic scarifier, and Hardox® 500 steel components. Designed for professional road maintenance with adjustable slope control and a robust, stable construction.



Model	Working Width (mm)	Machine Class (hp)	Weight (kg)	Length in Working Position (mm)	Tyres
Greider 2,4 XL	2400	130	1700	9435	10.00/75-15,3 + 13x5.00-6

## DETAILED SPECIFICATIONS

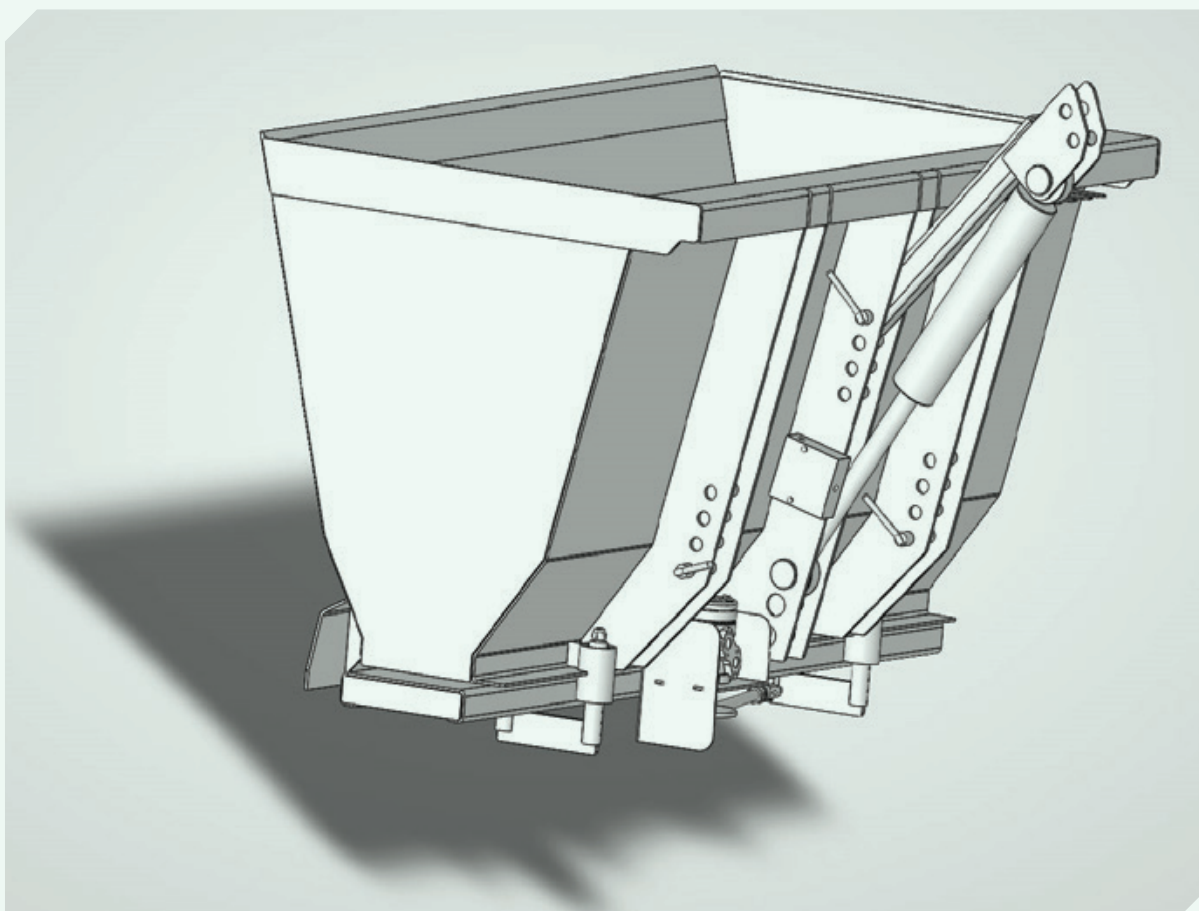
- ⊙ Working Width: 2400 mm
- ⊙ Length in Working Position: 9435mm (including stone blade and towing beam)
- ⊙ Length in Transport Position: 7400 mm
- ⊙ Suitable Tractor Power Class: from 130 hp
- ⊙ Installed Yellow Warning Light: 12V/24V, based on preference
- ⊙ Tyres: 10.00/75-15.3 (adjustable with 2 hydraulic cylinders)
- ⊙ Leveling Blade Tire: 13x5.00-6

# SAND SPREADERS

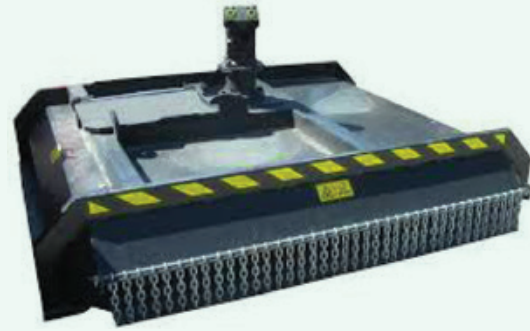
Tamsalu sand spreaders are equipped with two standard attachment systems: one for the 3-point hitch and another for the front loader. Depending on the specific task, operating costs can be optimized by utilizing two spreaders—one on the front loader and the other behind the tractor.

The sand spreader offers quick filling from the material pile by tilting it with the help of a push/pull cylinder.

Model	Capacity (L)	Spreading Width (mm)	Weight (kg)
LP 1000	1000	1900	420



# HYDRAULIC CHAIN MULCHERS



The CM1600H hydraulic cutting head is designed for efficient operation in uneven terrain and power line maintenance. It allows large areas to be cleared while stationary and supports left, right, or forward cutting, making it ideal for roadside work.

Suitable for excavators and boom-mounted equipment with continuous oil flow, the cutting head features a directly mounted Sunfab axial piston motor for maximum power transfer, high efficiency, and reliable performance under continuous high-pressure operation.



All wear-critical components of the cutting head are manufactured from durable Hardox steel. Beveled housing edges prevent material from accumulating inside the cutting head. The chain magazine allows easy chain extension as it wears. Optional bolt-on Hardox wear feet are available, and the lug mounting plate is hinged on one side for added durability and flexibility.

Model	Engine Type	Hardened Clearing Chain (mm)	Weight (kg)	Length / Height incl. Engine (cm)	Working / total width (cm)	Min. oil requirement / pressure
CM1600Ha	Axial piston motor	2 pcs 10 / 13 mm	400	210 / 80	160 / 185	150 L / min 180 bar

# MECHANICAL CHAIN MULCHERS

The CM1600M mechanical chain mulcher is designed for efficient clearing of verges, ditches, and forest roads, including rocky and demanding terrain. Clearing chains (10 or 13 mm) provide a reliable and cost-effective solution, while repeated cutting slows regrowth.



## STURDY CONSTRUCTION

The cutting head pivots freely up to  $+90^\circ$  and down to  $-35^\circ$ , maintaining full functionality throughout the adjustment range. Its double-beveled housing and skids are manufactured from Hardox® wear steel, with optional 20 mm bolt-on wear skids.



## FRONT AND REAR MOUNTING

Suitable for both front and rear tractor mounting (540–1000 rpm), the CM1600M features a durable angular gearbox and a 160 cm working width. Reach from tractor center is 3.74 m, extendable with an optional side shifter (+55 cm reach, 60 cm lateral movement), improving maneuverability in confined areas.

The mulcher handles wood up to 15 cm thick, includes spring-loaded collision protection, and is mechanically locked for transport. Beveled housing edges prevent material buildup, and the chain system allows easy extension as wear occurs.



BondioliPaves' sturdy angular gear.



Bevelled edge housing on the cutting head.



The stem is crushed into fragments at the cutting point, causing the growth to dry out and significantly slowing regrowth compared to clean cuts. Chain wear does not reduce cutting performance, unlike blade wear in conventional cutter systems.



The double edge housing of the cutting head and the skids are made of Hardox® wear steel. The edges of the cutting head protective housing have a 45-degree bevel, from which the cut material bounces downwards and does not accumulate in the side corners. A 13 mm pair of chains has 7-8 links of extension.



The optional CM1600M side shifter increases the reach by 55 cm and speeds up evasive manoeuvres.

Model	Tractor Weight (kg)	Hardened Clearing Chain	Weight (kg)	Number of drive belts	Working width (cm)	PTO RPM
CM1600M	min. 4000	2 pcs 10 / 13 mm	800	2×4 pcs	160	540-1000

# WHY TO CHOOSE TAMSALU EPT?

## ⊙ SKILLED TEAM

Our people are true professionals, backed by years of experience

## ⊙ TOP QUALITY PRODUCT

Every product meets high standards and is **BUILT TO LAST**

## ⊙ TRADITIONS AND KNOW-HOW SINCE 1950

Deep roots and decades of experience will ensure a solid future

## ⊙ RELIABILITY & PRECISION

Our partners know they can count on us- always

## ⊙ ADVANCED WELDING AND MANUFACTURING TECHNOLOGY

We use only top-tier equipment  
Best results are guaranteed

## ⊙ CONTINUOUS INNOVATION

We constantly develop new solutions to stay one step ahead

# READY FOR YOUR NEXT CHALLENGE?

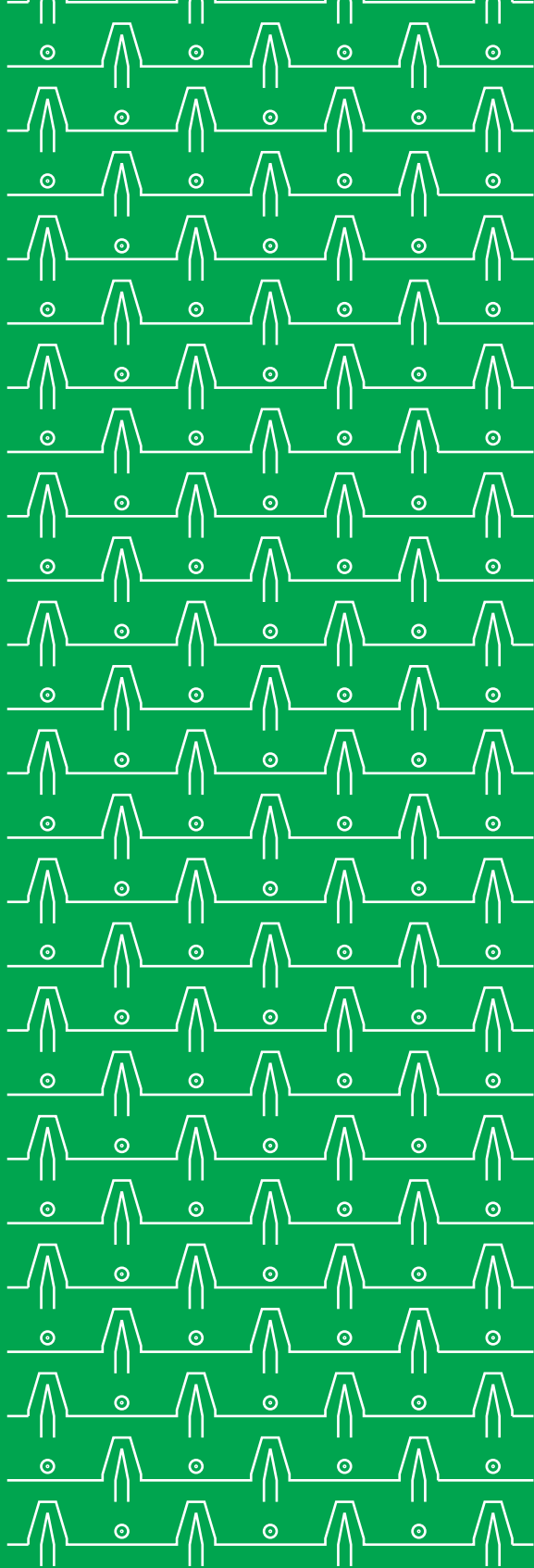
Contact us via e-mail at:

[sales@tamsaluept.com](mailto:sales@tamsaluept.com)

we will find the best solution for you!

discover more at

[www.tamsaluept.com](http://www.tamsaluept.com)



Tamsalu EPT AS is a metalworking company fully based on Estonian capital. Our goal is to provide customers with flexible, fast, and innovative solutions in the field of metalworking.

